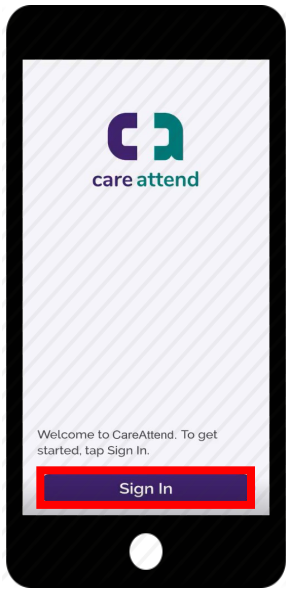


Gelitaanka Abka CareAttend Marka Ugu Horeysa

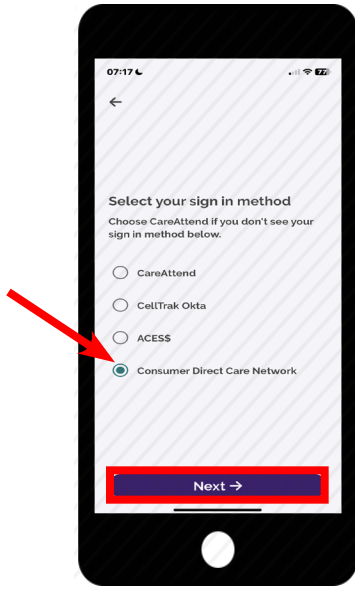
Sameyso Lambar Sireed

Markaad marka kuugu horreyso gasho abka CareAttend waxaad u baahan doontaa inaad sameysato lambar sireed, aad daarto adeegyada goobta, oo aadna oggolaato marin u helka dhaqdhaqaaqyada hawleed ee ka dhacaya gudaha aaladaada. Tilmaamaha dib u dejinta eray-sireedkaaga waxaa laga heli karaa dhammaadka tababarkan.



1

Gudaha Abka CareAttend, dooro **"Sign In (Gal)."**



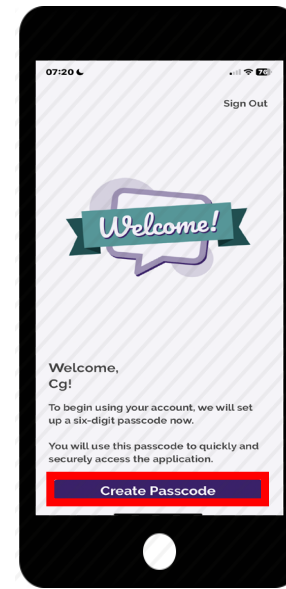
2

Dooro **"Consumer Direct Care Network"** oona taabo **"Next (Xiga)."**



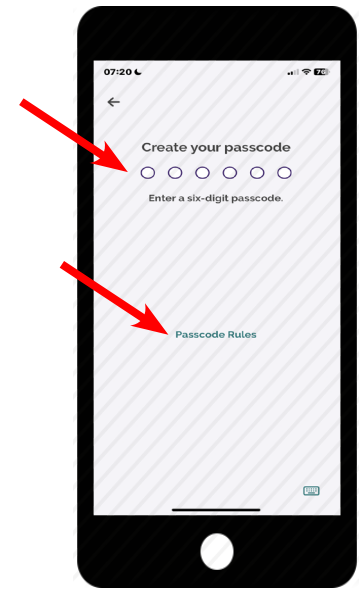
3

Geli cinwaanka iimaylka ee aad uga diiwaangashan tahay Consumer Direct Care Network iyo eray-sireedkaaga. Kadibna, dooro **"Sign In (Gal)."**



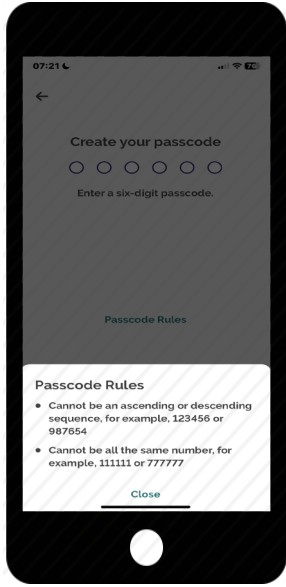
4

Waxaa dib lagugu soo jiheyn doonaa abka CareAttend. Dooro **"Create Passcode (Sameeyso Lambar-sireed)."**



5

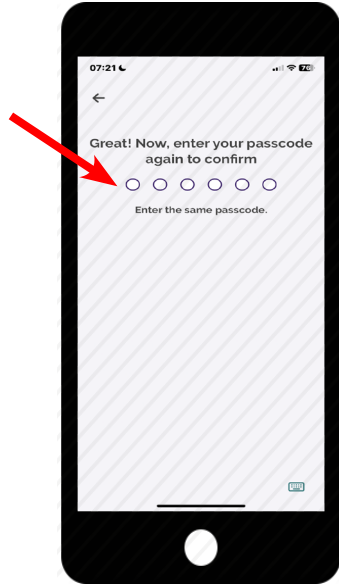
Sameyso lambar sireedkaaga lixda-tiro ah. Wixii ah macluumaadka xeerarka lambar-sireedka, taabo **"Passcode Rules (Xeerarka Lambar-sireedka)"**



6

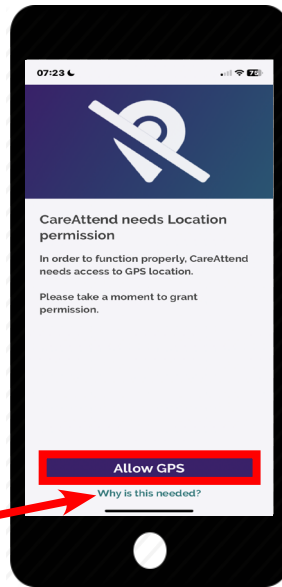
Lambarrada sirta ahi ma noqon karaan taxane kor u kacaya ama hoos u dhacaya, tusaale ahaan, 123456 ama 987654.

Lambarrada sirta ah dhammaantood ma noqon karaan lambar isku mid ah, tusaale ahaan, 111111 ama 777777.



7

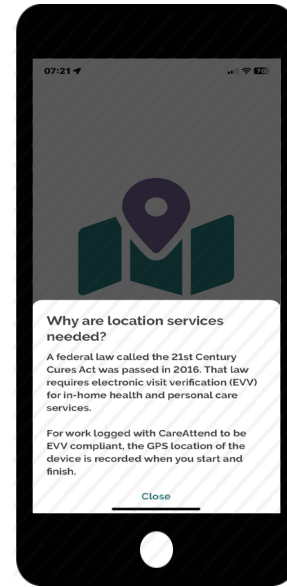
Geli lambar-sireedkaaga mar kale si aad u xaqiijiso.



8

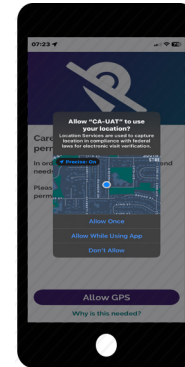
CareAttend waxeey u baahan tahay in Location Services (Adeegyada Goobta) la daaro. Wixii macluumaad dheeraad ah, taabo **“Why is this needed (Maxaa tan loogu baahan yahay)?”**

Markaad dhameeyso, taabo **“Allow GPS (Oggolow GPS).”**



9

Xeerka Daaweynta Qarniga 21-aad wuxuu u baahan yahay xaqiijinta booqashada elektaroonigga ah (EVV) ee adeegyada daryeelka lagu bixiyo guriga iyo kan shaqsi ahaaneed.



10

Waxaad arki doontaa mid ka mid ah sawirrada kor ku xusan iyadoo ku xiran aaladaada.

Dooro **“Allow (only) While Using the App (oo keliya) Inta Aan Isticmaalayo Abka.”**

ku sii socon doonto bogga xiga



11

Dhaqdhaqaaqa iyo jimicsiga/
dhaqdhaqaaqa jireed aya gacan
ka geysan kara tashiilida tamarta
aalada marka la isticmaalayo
abka. Wixii macluumaad
dheeraad ah, taabo
**“Why is this needed (Maxaa
tan loogu baahan yahay)?”**

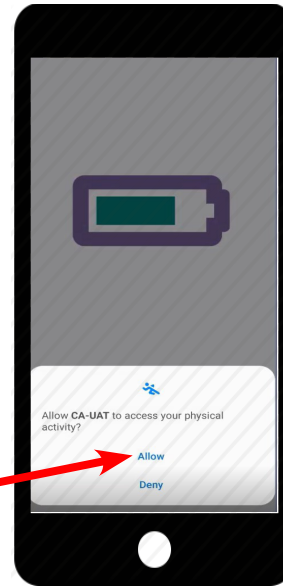
Markaad dhameyso, taabo
“Next (Xiga).”



12

U hoggaansanaanta EVV
waxay u baahan tahay in
la diiwaangeliyo goobta
GPS-ka marka la isticmaalayo
CareAttend.

Marin u helka dhaqdhaqaaqa
iyo hawlaha jimicsiga/
dhaqdhaqaaqa jirka waxay
yareysaa inta jeer ee ay
GPS-ku diiwaangelineyso
dhaqdhaqaaqa taasoo tashiilin
doonta dabka batteriga.

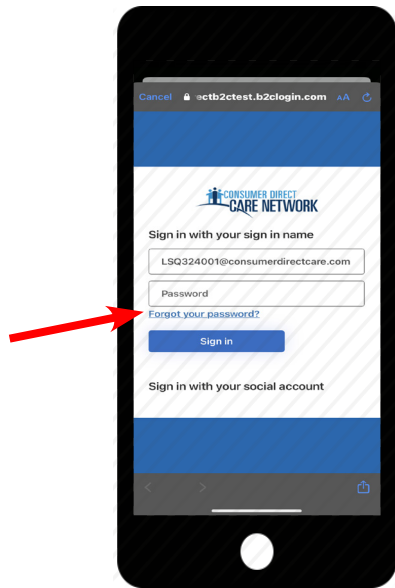


13

Haddii ay kuu soo baxdo,
dooro **“Allow (Oggolow).”**

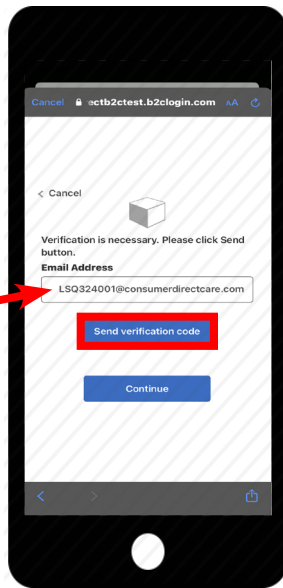
Illowday Eray-sireedkaaga

Haddii aad illowday eray-sireedkaaga, waxaad dib u hagaajisan kartaa eray-sireedkaaga adoo adeegsanaya tilmaamaha hoose. Ogsoonaw in dib uga hagaajinta eray-sireedkaaga gudaha CareAttend ay sidoo kale dib u hagaajin doonto eray-sireedkaaga bogga intarneetka ee DirectMyCare.



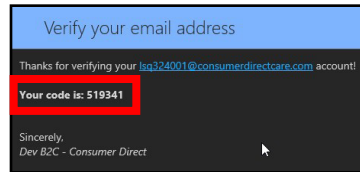
1

Si aad dib ugu hagaajiso eray-sireedkaaga, taabo **"Forgot your password (Illowday Eray-sireedkaaga)?"**



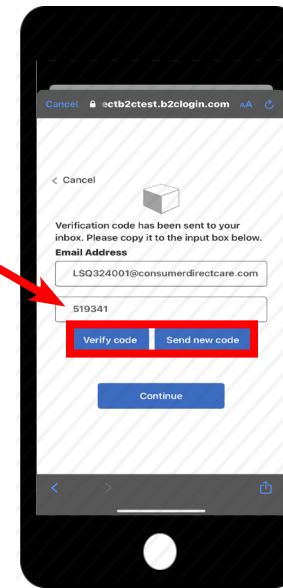
2

Geli iimaylkaada gudaha goobta sanduuqa ee lagu qoraayo Cinwaanka iimaylka, kadibna dooro **"Soo dir koodhka xaqiijinta."**



3

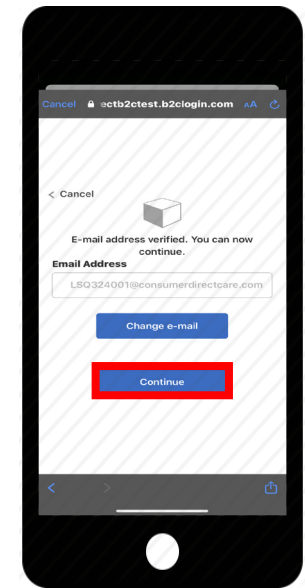
Ka eeg iimaylkaada fariin ka socota *Microsoft on behalf of Dev B2C (Microsoft oo ku hadleysa magaca Dev B2C)*. Hubso inaad eegto galalkaada nuxurka aan la rabin/gashinka ah.



4

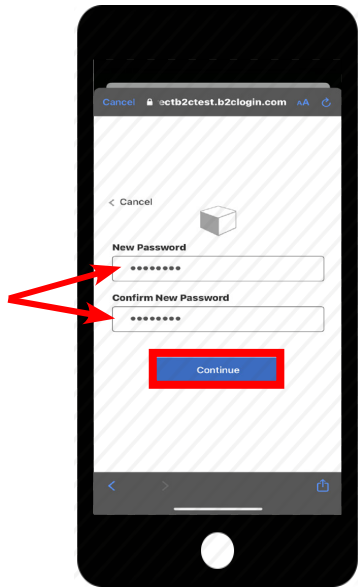
Geli koodhka gudaha sanduuqa koodhka xaqiijinta, kadibna dooro **"Verify code (Xaqiiji koodhka)."**

Haddii aadan helin koodhka, dooro **"Send new code (Soo dir koodh cusub)"** oona eeg iimaylkaada mar kale.



5

Marka cinwaankaada iimaylka la xaqiijyo, dooro **"Continue (Sii socio)."**



6

Qor eray-sireedkaaga cusub, kadibna mar kale ku qor gudaha sanduuqa xaqiijinta.

Markaad dhameyso, dooro **“Continou (Sii soco).”**



7

Eray-sireedkaaga hadda dib ayaa loo hagaajiyay.